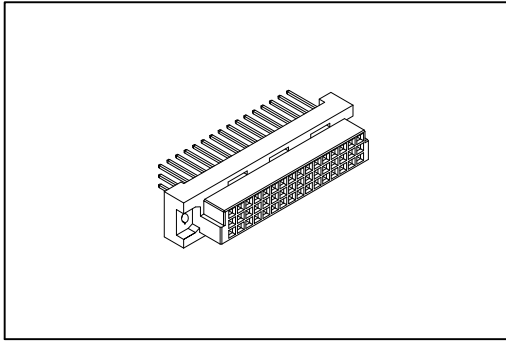


# 9001 Series

## DIN41612 Half C Type Female



### Material:

Housing: Thermoplastic Polyester Glass Filled UL94V-0.

Contacts: Copper Alloy.

### Electrical Characteristics:

Current Rating: 2 A.

Dielectric Withstanding Voltage: AC 1000V.

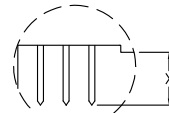
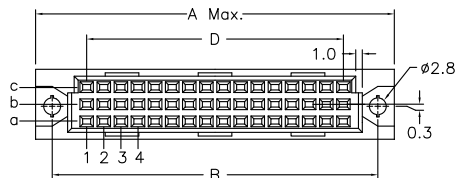
Insulator Resistance: 1000M $\Omega$  min.

Contact Resistance: 20m $\Omega$  max.

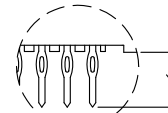
Operating Temperature: -55°C +125°C.

### Features:

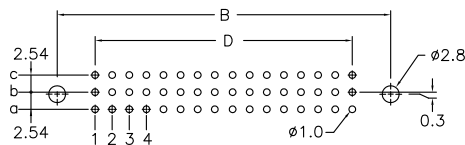
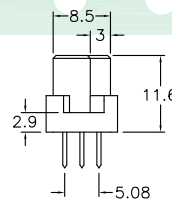
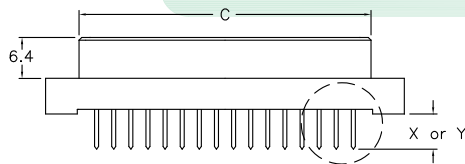
- \* Mates with Male 3Row Half
- 9001-15 Half C Type.
- 9001-17 Half R Type.



Dip Type



Press Fit Type



P.C. Board Layout

Length	1	2	W1	W2
X	4.0	2.5	13	17
Y	4.6	6.3	13	17

Position	A	B	C	D
48/32/24/16/8	55.0	49.36	44.40	38.10
30/20/15/10/5	39.8	34.12	29.20	22.86

Pitch	Position	Rows with Contacts	Contact Arrange
2.54mm	48	a b c	C-+--- b-+--- a-+--- 1 2 3 4
	32	a - c	C-+--- b-+--- a-+--- 1 2 3 4
	30	a b c	C-+--- b-+--- a-+--- 1 2 3 4
	20	a - c	C-+--- b-+--- a-+--- 1 2 3 4
	16	a - -	C-+--- b-+--- a-+--- 1 2 3 4
	10	a - -	C-+--- b-+--- a-+--- 1 2 3 4
5.08mm	24	a b c	C-+--- b-+--- a-+--- 1 2 3 4
	16	a - c	C-+--- b-+--- a-+--- 1 2 3 4
	15	a b c	C-+--- b-+--- a-+--- 1 2 3 4
	10	a - c	C-+--- b-+--- a-+--- 1 2 3 4
	8	a - -	C-+--- b-+--- a-+--- 1 2 3 4
	5	a - -	C-+--- b-+--- a-+--- 1 2 3 4

## Ordering information

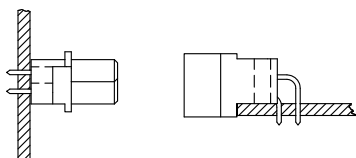
9001-	1	6	48	1	C	00	P	L1	A
Series	1: 2.54mm 2: 5.08mm	6: Female	Position	1: Dip Length 2: Dip Length W1: Dip Length W2: Dip Length	C: Selective Gold Plated	00: G/F	Blank: Dip P: Press Fit	Blank: W/O Lock L1: With Lock See Page CC02	A: Tray Package

# 9001 Series

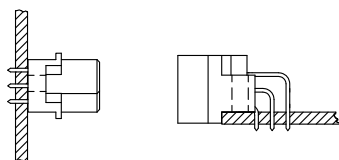
## DIN41612 Mating Introduce



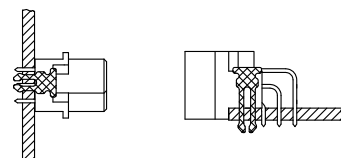
2 Row insulator  
B (Standard mounting)  
Mounting axis  
of the connector



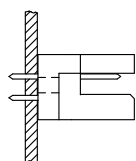
3 Row insulator  
C (Standard mounting)  
Mounting axis  
of the connector



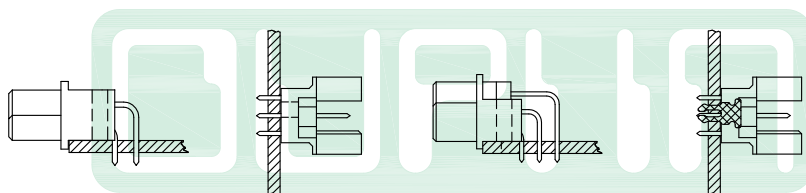
Board lock available  
L1=P.C.B. Thickness 1.6 ~2.0 mm  
L2=P.C.B. Thickness 2.8 ~3.2 mm



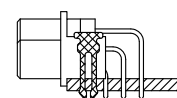
Q (Reverse mounting)  
Mounting axis  
of the connector



R (Reverse mounting)  
Mounting axis  
of the connector

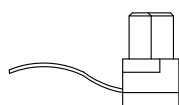


Board lock available  
L1=P.C.B. Thickness 1.6 ~2.0 mm  
L2=P.C.B. Thickness 2.8 ~3.2 mm

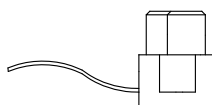


I.D.C. Type Ribbon Cable

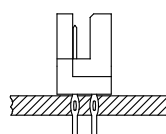
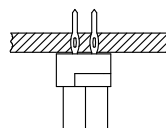
2 Row insulator



3 Row insulator



Press Fit Type  
2 Row insulator



3 Row insulator

